

A Journey Through the Jungle with

Henri Rousseau



Tiger in a Tropical Storm Henri Rousseau 1891

NORTHART

WWW.NORTHART.CO.NZ

Look and Learn about famous French artist Henri Rousseau, then have fun drawing and painting your own wild jungle scene incorporating your favourite jungle animals!

HENRI ROUSSEAU

1844 - 1910

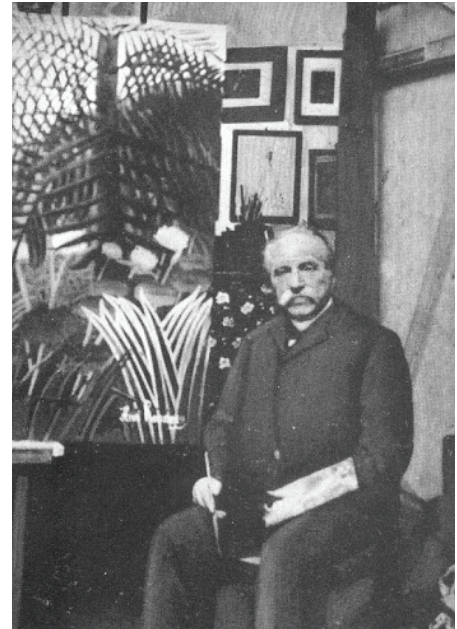
Henri Rousseau was a French Painter who was famous for his paintings of Jungle Scenes. He painted wild animals in the jungle, but he never saw a real jungle, he just used familiar plants and made them bigger.

He enjoyed visiting his local zoo and botanical gardens in Paris. He liked to sketch the plants and animals he saw there and then create his 'Jungle Paintings' from these drawings.

Rousseau was part of the 'Post-Impressionist' movement and painted in a 'Naïve' Style. A Naïve artist is described as an artist who lacks a formal art education or creates in a simple, childlike way.

He didn't start painting till he was in his 40s and to start with some people made fun of his pictures, they thought they were too 'simple' but eventually he became very popular.

Today his pictures are highly regarded and are exhibited in the great museums and galleries all around the world.



Look at some of Rousseau's paintings:



Apes in the Orange Grove
Henri Rousseau
1910



Exotic Landscape
Henri Rousseau
1910



Tiger Battling a Buffalo
Henri Rousseau
1908-1909



A Lion Devouring its Prey
Henri Rousseau
1905



The Merry Jesters

Henri Rousseau

1906

LET'S CREATE!

Now, in Henri Rousseau's footsteps, you are going to draw and paint your own Jungle Scenes using your own garden, imagination and favourite jungle animals!



MATERIALS

- Paper and light card (A3 is a good size, the thicker the paper the better)
- Paint: primary colours; red, blue, yellow & white
- Brushes: a variety of sizes if possible
- Pens, crayons, pencils
- Scissors
- Glue
- Pictures of wild animals, plants and gardens

PROCESS

STEP 1 - PREPARATION

- Using one colour, paint a simple, thin, watery, wash background on 1 or 2 pieces of your paper. Yellow is a good choice for a base colour for this project.
- While paint is drying wander around your garden or look out your window. Look at all the different shades of green you see in the plants and trees. Look at all the different shapes and patterns.



STEP 2 - WARM UP



- Fold a piece of A4 paper 2 or 3 times (less folds for smaller children). In each box draw with a pen or pencil some of the different foliage/ plant & leaf patterns you can see. You can draw just the leaf shapes or the whole tree, bush or plant you decide. Look at how the light changes the shades as well.



- Then, sketch out a scene in pencil or pen quickly from your garden or your imagination incorporating some of these plants you have been looking at.

Note: Don't spend too long on this part - it is just a warm up!

Now the fun really starts!

STEP 3 - PAINTING!

You only need the four colours; red, yellow, blue and white to make lots of colours. Pictured is the 'Colour Wheel' which artists use to help them with their colour mixing. Have a play with colour mixing on a plate and see what you can come up with!

Blue and yellow makes...yes, green! To make green darker you can add a tiny bit of red (opposite on the colour wheel) or a bit more blue. To make the green lighter you can add white, a bit more yellow or more water.

THE COLOUR WHEEL



- Now you can paint your jungle background scene on to your pre-washed paper incorporating the plants you have been looking at. Try painting lots of different shades of green and lots of different patterns from the garden.
- Do what Rousseau did and make the leaves and plants bigger than they really are to create a real jungle scene!

STEP 4 - JUNGLE ANIMALS!

Finally, once you have created your 'Jungle Scene' background you can decide which jungle animals you wish to place inside your garden/jungle.

1. Find images of jungle animals from the internet (under supervision), books, magazines or make them up from your imagination.
2. Think about where you may like to place your animals in the scene.
3. Then on your second piece of light card or thick paper, draw, then paint your wild animals. Try to paint and draw your animals in a contrasting colour to help them stand out. For example, orange is a good contrast to green.
4. Once dry cut your animals out and stick down on your picture.



VOILA!

Now you have your own painted Jungle Scene that Henri Rousseau would be proud of! *Have fun and enjoy*