

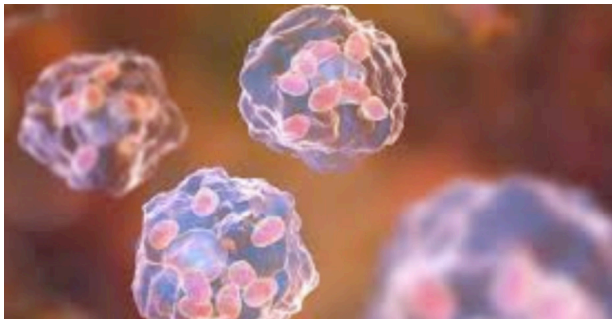
Macrocosm and Microcosm

The art of **Luise Fong**

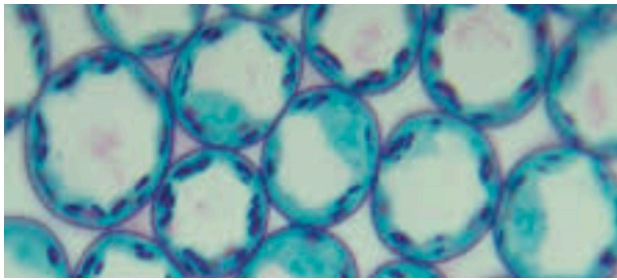


Luise Fong, Nova 3, Acrylic on Board

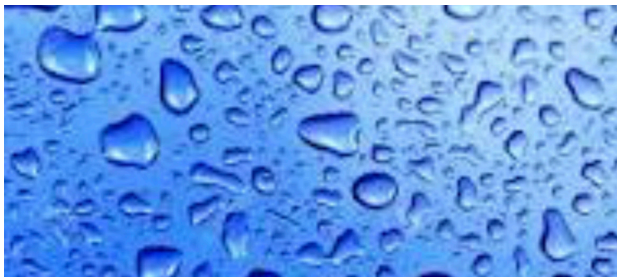
Macrocosm and Microcosm refers to a vision of the cosmos where the 'part' (microcosm) reflects the 'whole' (macrocosm) and vice versa.



Human cells



Plant cells



Water droplets

Patterns in Nature

So shapes and patterns are repeated in nature, space and humans alike - a bit like how the shapes of cells in our bodies are similar to the shapes of cells within plants and similar to the shape of a water droplet. These human cells look like asteroids.

These shapes then repeat many times, different sizes forming patterns in nature (biology), in the cosmos (astrology) and in human disease (pathology).

That's a lot of 'ologies' !

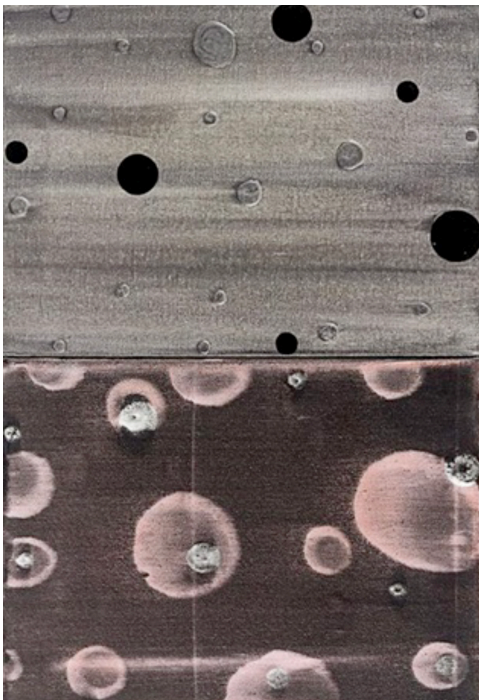
Look at the pictures and notice how the shapes are very similar - just different sizes. They repeat their own basic shapes but are each slightly different - rather like us humans - we are all variations of the same shape. Take a look around and notice plants are like this too. For example each leaf on a tree is a similar shape, just a different size to the next one.

Macrocosm and Microcosm

The art of Luise Fong

Luise Fong is a New Zealand artist. She was born in Sandakan in Malaysia 1964, her father being Chinese and mother a Pakeha New Zealander. Soon after she was born, the family moved to New Zealand. Luise studied textile design at Wellington Polytechnic, you may notice that her art often reflects the textures and patterns that we see in different textiles - repetitive patterns are formed by the nature of the process of making ie - the loom. She then went to study at Elam University in Auckland and graduated in 1991 with a degree in printmaking.

Let's look at some of her work:



'Orbit -6-'

Mixed media

You will see that she incorporates shapes and textures from nature to re arrange into her own designs or patterns. Some people believe the earth began with a 'Big Bang!' and these reflect the cosmos, shapes from the planets and from cells - cells are the very essence of any life, the clusters look like big explosions, just like stars coming to life or 'Novas'.



'Tronic'

Mixed media

***'Nova 3'***

Acrylic on board

More examples of Luise's work

A 'Nova' is a transient astronomical event, a sudden bright light, possibly a new star exploding into life. Notice the shapes and the colours she has used here and how they remind us of these cosmic events.

***'Blue Nova II'***

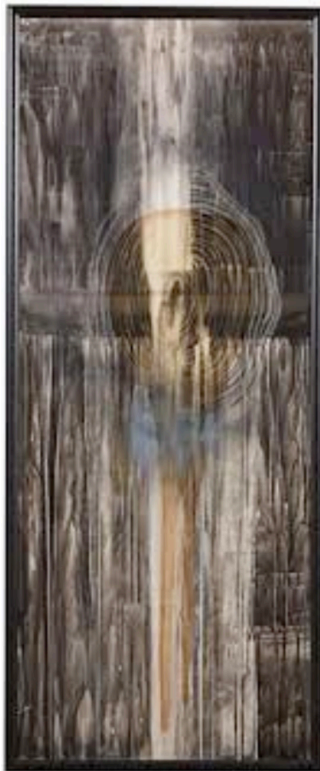
mixed media

How Luise Fong is inspired by her environment



In 2008 Luise Fong did an 'Artist in residency' - this is where an artist spends time in a place that sometimes another artist has lived before just to concentrate on their work and respond to their environment. She spent three months living and working in the old home of Colin McCahon who lived and worked as a painter in the 1950's.

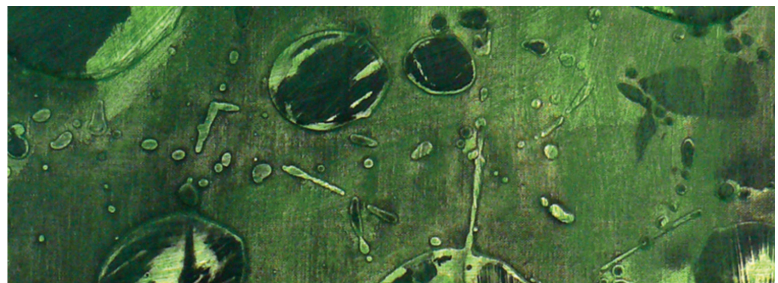
The house and studio sit in Titirangi bush, she responded with a series of works depicting the closeness of the nature that surrounded her, the trees, leaves, earthy dark tones of greens and browns. She uses the shapes and textures that appear in the nature that she is surrounded by.



Here is some of the work she made

Left: In this work we clearly see the rings of a tree and the texture of the bark, maybe the dripping paint reflects the amount of rain that falls on the Waitakere ranges. The big thick trunk reflecting the strength and age of the tree.

Below: this is called 'Untitled' but I think we know what it is!



Let's Create



You will need:

- watercolour paper
- cardboard, scissors
- water based paint
- rollers
- big brush
- pencils
- leaves
- masking tape
- old plate or shallow dish
- water spray bottle.

How to make your artwork:

- **Choose either** shapes from nature (use actual leaves or make leaf shapes) or some shapes from the cosmos (maybe a star shape or an asteroid shape)
- **Decide on your colours.** Remember they need to be reflective of your chosen subject! **Note:** Don't forget Luise uses her colours carefully, they all have some symbolism - this means that the colours reflect something about her subject. For example - she uses a lot of silvers and bright whites for some of the 'cosmic' images maybe they remind us of a space craft the bright, glittery stars, or the white moon.
- **Tape down** your watercolour paper to a table or board. This will help to keep it flat as it dries.
- **Paint a background wash on each one** - a wash is just thinned paint (with water usually) a big brush is good to use for this.
- **Draw some shapes on card and cut out carefully with scissors.** Remember use images from **either nature or the cosmos.** You can make the shapes all different sizes or all similar - it's up to you!
- **Now arrange the cut out images and or the leaves** on your paper that has the colour wash.
- **Next mix some paint on a plate,** dip in your roller so it's coated all over, then roll over your cut out shapes taking care not to push them around as you roll. You may need to put more paint on the roller and roll a few times.
- **Peel off the shapes** and see what you have!

Yay!